



# WOMEN APPAREL

COURT  
APPAREL



EVERLAST



# JACKET COURT

MATERIAL:  
75% NYLON  
25% SPANDEX  
2/S 3/M 1/L



SKU: EV63RTL801  
COLOR: Black



# JACKET COURT

MATERIAL:  
75% NYLON  
25% SPANDEX

2/S 3/M 1/L



SKU: EV63RTL808  
COLOR: White





MATERIAL:  
80% POLYESTER  
20% SPANDEX  
2/S 3/M 1/L



SKU: EV23BTL163  
COLOR: Navy

**DRESS PIPING**  
INCLUDES INNER LINING & POCKETS





**DRESS PIPING**  
INCLUDES INNER LINING & POCKETS



**MATERIAL:**  
80% POLYESTER  
20% SPANDEX

**2/S 3/M 1/L**

**SKU: EV23BTL168**  
**COLOR: White**



**MATERIAL:**  
88% POLYESTER  
12% SPANDEX  
**LINING:**  
81% POLYESTER  
19% SPANDEX

**2/S 3/M 1/L**



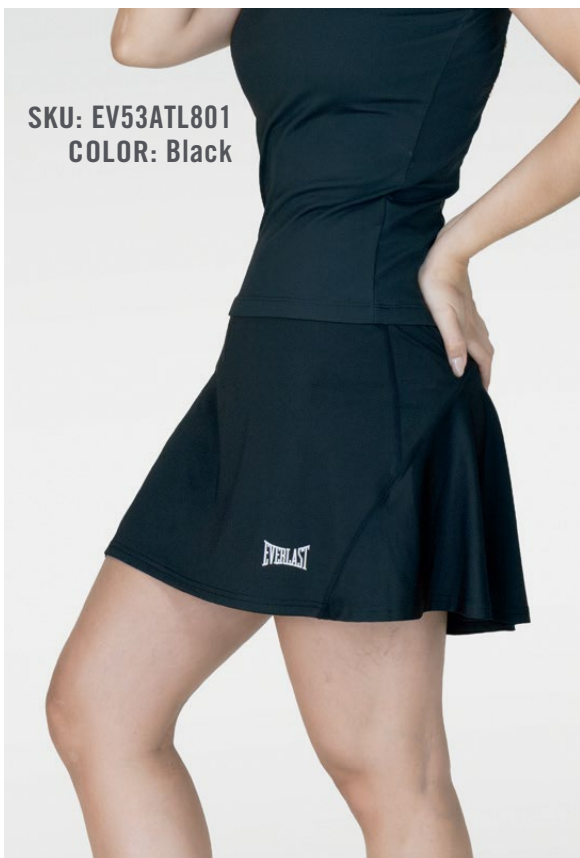
**SKU: EV53ATL803**  
**COLOR: Navy**



**SKORT SPLIT**



SKU: EV53ATL801  
COLOR: Black



SKU: EV53ATL808  
COLOR: White



# SKORT SPLIT





# SKORT MESH

MATERIAL:  
81% POLYESTER  
19% SPANDEX  
LINING:  
92% POLYESTER  
8% SPANDEX

2/S 3/M 1/L



SKU: EV53RTL511  
COLOR: Black





# SKORT MESH





SKU: EV53RTL518  
COLOR: White



# SKORT MESH



# SHORT LASER

MATERIAL:  
75% NYLON  
25% SPANDEX  
STRIPE  
LINING:  
88% POLYESTER  
12% SPANDEX  
2/S 3/M 1/L



SKU: EV53RTL858  
COLOR: White



# SHORT LASER



SKU: EV53RTL851  
COLOR: Black



SKU: EV53RTL859  
COLOR: Pink



EVERLAST

# SHORT LASER

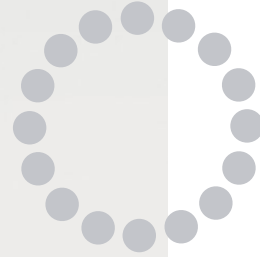


SKU: EV53RTL853  
COLOR: Navy





MATERIAL:  
83% POLYESTER  
RECYCLED  
17% SPANDEX  
2/S 3/M 1/L



# BIKER COURT

SKU: EV53BTL773  
COLOR: Navy



SKU: EV53BTL771  
COLOR: Black



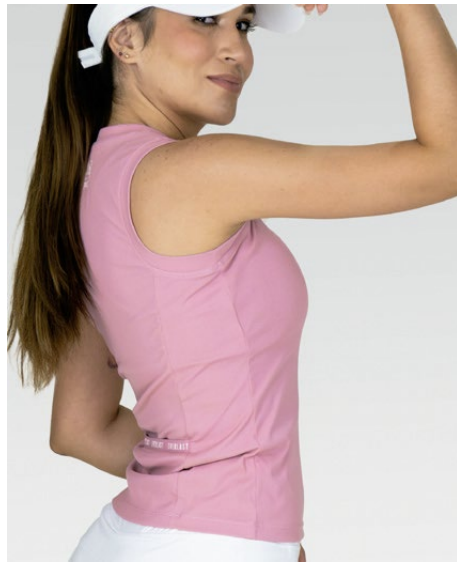
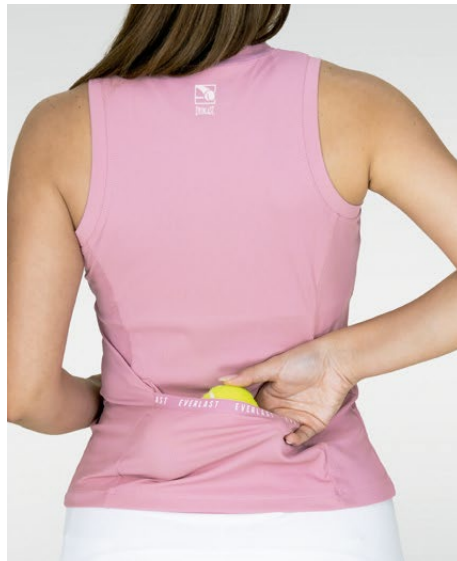
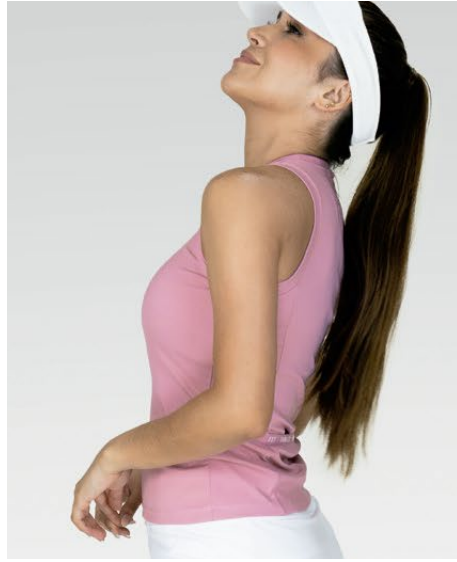
EVERLAST





MATERIAL:  
88% POLYAMIDE  
12% ELASTANE  
2/S 3/M 1/L

SKU: EV43BTL369  
COLOR: Pink



TANK RIBBED







# TANK RIBBED



# T-SHIRT JACQUARD

MATERIAL:  
88% POLYESTER  
12% SPANDEX JERSEY  
92% POLYESTER  
8% SPANDEX  
JACQUARD MESH  
2/S 3/M 1/L



SKU: EV73RTL151  
COLOR: Black



SKU: EV73RTL158  
COLOR: White





SKU: EV73RTL159  
COLOR: Pink



SKU: EV73RTL153  
COLOR: Navy

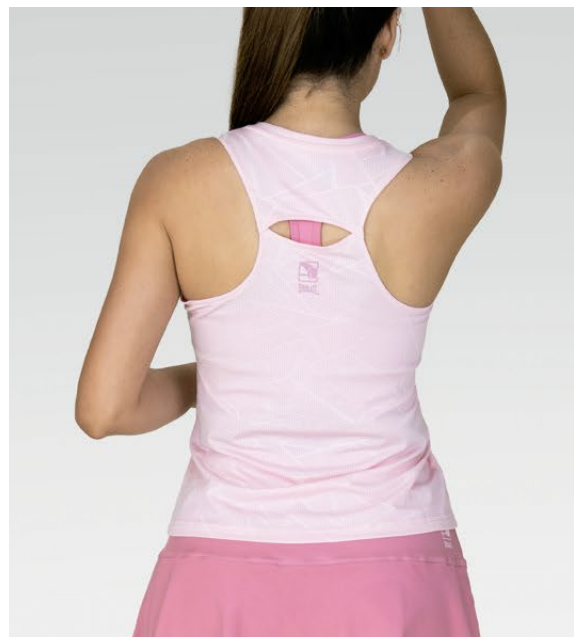
# T-SHIRT JACQUARD





MATERIAL:  
88% POLYESTER  
12% SPANDEX JERSEY  
92% POLYESTER  
8% SPANDEX  
JACQUARD MESH  
2/S 3/M 1/L

SKU: EV43RTL209  
COLOR: Pink



# TANK JACQUARD





# TANK JACQUARD



# SPORTSWEAR



# CREW SWEATSHIRT & PANT

MATERIAL:  
60% POLYESTER 40% COTTON

2/S 3/M 2/L



SKU: EV64NAL401  
COLOR: Black



SKU: EV14NAL601  
COLOR: Black

# CREW SWEATSHIRT & PANT

MATERIAL:  
60% POLYESTER 40% COTTON

2/S 3/M 2/L

EVERLAST

SKU: EV64NAL409  
COLOR: Mauve



SKU: EV14NAL609  
COLOR: Mauve





# PUFFED HOODIE & PANT

MATERIAL:  
60% POLYESTER 40% COTTON

2/S 3/M 2/L

SKU: EV64NAL501  
COLOR: Black



SKU: EV14NAL501  
COLOR: Black



# PUFFED HOODIE & PANT

MATERIAL:  
60% POLYESTER 40% COTTON

2/S 3/M 2/L





SKU: EV73NAL336  
COLOR: Lime



SKU: EV73NAL339  
COLOR: Pink



# 1910 CROP TOP

MATERIAL:  
60% POLYESTER, 40% COTTON

2/S 3/M 2/L



SKU: EV73NAL332  
COLOR: Charcoal



# SIDE HOODIE & SHORT

MATERIAL:  
60% POLYESTER, 40% COTTON

2/S 3/M 2/L



SKU: EV63NAL361 COLOR: Black  
SKU: EV53NAL361 COLOR: Black



SKU: EV53NAL366 COLOR: Dark Green  
SKU: EV63NAL366 COLOR: Dark Green

# SPLIT LOGO CROP TOP



MATERIAL:  
60% POLYESTER, 40% COTTON

2/S 3/M 2/L



SKU: EV72NAL348 COLOR: White

# OVERSIZED T-SHIRT



SKU: EV72NAL769 COLOR: Lilac



SKU: EV72NAL761 COLOR: Black

# CROPPED HOODIE

MATERIAL:  
60% POLYESTER, 40% COTTON

2/S 3/M 2/L

EVERLAST



SKU: EV92NAL109  
COLOR: Purple

# 1910 TANK & SHORT

MATERIAL: 60% POLYESTER, 40% COTTON

2/S 3/M 2/L

EVERLAST



# EQUAL LONG SLEEVE

MATERIAL: 60% POLYESTER, 40% COTTON

2/S 3/M 2/L

SKU: EV91NAL648  
COLOR: White









**SKU: EV33AAL736**  
**COLOR: Green**

**SKU: EV83AAL736**  
**COLOR: Green**



**SKU: EV83AAL737**  
**COLOR: Red**

# RYKER SHORT

MATERIAL:

86% POLYESTER - 14% SPANDEX

2/S 3/M 2/L



SKU: EV53AAL737  
COLOR: Red



SKU: EV53AAL731  
COLOR: Black/Purple

# RYKER T-SHIRT

MATERIAL:

86% POLYESTER - 14% SPANDEX

2/S 3/M 2/L

EVERLAST



SKU: EV73AAL731  
COLOR: Black



SKU: EV73AAL736  
COLOR: Green



SKU: EV73AAL737  
COLOR: Red

# RIKER TANK

MATERIAL:

95% MODEL - 5% SPANDEX

2/S 3/M 2/L



SKU: EV43AAL181  
COLOR: Black



SKU: EV43AAL186  
COLOR: Green



SKU: EV43AAL187  
COLOR: Red



SKU: EV43AAL189  
COLOR: Purple

# RIBBED BRAD & LEGGING

MATERIAL:

86% POLYESTER - 14% SPANDEX

2/S 3/M 2/L

EVERLAST



SKU: EV83AAL201  
COLOR: Black



SKU: EV33AAL203  
COLOR: Navy

SKU: EV83AAL203  
COLOR: Navy

# SLIT TANK

MATERIAL:

95% POLYESTER - 5% SPANDEX

2/S 3/M 2/L

EVERLAST



SKU: EV43AAL241  
COLOR: Black



SKU: EV43AAL243  
COLOR: Navy



SKU: EV43AAL248  
COLOR: White



# SLIT BRAD & LEGGING

MATERIAL: 86% POLYESTER - 14% SPANDEX

2/S 3/M 2/L





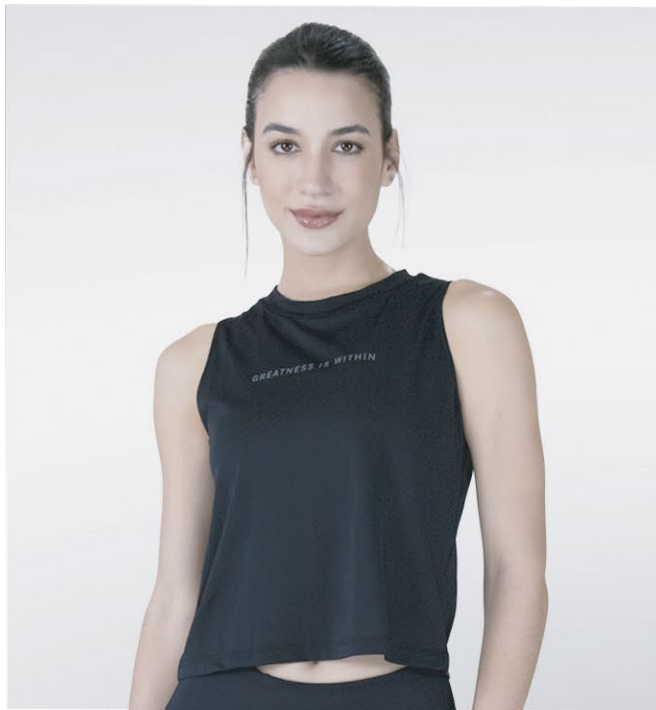


# MESH CROP TANK

MATERIAL:

95% POLYESTER- 5% SPANDEX

2/S 3/M 2/L



SKU: EV43AAL541  
COLOR: Black



SKU: EV43AAL549  
COLOR: Purple



SKU: EV43AAL547  
COLOR: Light peach



# LOGO BIKER SHORT

MATERIAL: 86% POLYESTER - 14% SPANDEX

2/S 3/M 2/L



SKU: EV53AAL407  
COLOR: RED



SKU: EV53AAL409  
COLOR: Purple

# S.1910 T-SHIRT

MATERIAL:

95% MODEL - 5% SPANDEX

2/S 3/M 2/L



SKU: EV73AAL181  
COLOR: Black



**SKU: EV73AAL186**  
**COLOR: Light Green**



**SKU: EV73AAL187**  
**COLOR: Light Peach**



**SKU: EV73AAL188**  
**COLOR: White**



**SKU: EV73AAL189**  
**COLOR: Purple**

# STRIPE SHORT



**MATERIAL:**

**100% POLYESTER**

**LINING 86% POLYESTER - 14% SPANDEX**

**2/S 3/M 2/L**



**SKU: EV53AAL492**

**COLOR: Gray**



**SKU: EV53AAL499**

**COLOR: Purple**

# BOLD LEGGING



MATERIAL:  
86% POLYESTER - 14% SPANDEX

OPEN SIZE

XS S M L XL



SKU: EV8BAAL652  
COLOR: Gray



SKU:EV8BAAL659  
COLOR: Purple



SKU: EV8BAAL651  
COLOR: Back

# BOLD LEGGINGS

MATERIAL: 86% POLYESTER - 14% SPANDEX

OPEN SIZE

XS S M L XL



SKU: EV89ABL652 COLOR: Charcoal



SKU: EV89ABL651 COLOR: Black

# BOLD LEGGING

MATERIAL: 86% POLYESTER - 14% SPANDEX

2/S 3/M 2/L



SKU: EV89ABL654 COLOR: Blue



SKU: EV89ABL657 COLOR: Purple



# SCRUNCHIES

MATERIAL:  
86% POLYESTER - 14% SPANDEX



SKU: EVBSC221  
COLOR: Black



SKU: EVBSC226  
COLOR: Green



SKU: EVBSC227  
COLOR: Red

# NON SLIP HEADBAND

MATERIAL:  
86% POLYESTER - 14% SPANDEX



SKU: EVBHB221  
COLOR: Black



SKU: EVBHB222  
COLOR: Charcoal



SKU: EVBHB227  
COLOR: Red



SKU: EVBHB229  
COLOR: Purple



# REUSE RECYCLE TRANSFORM

An innovative HIGH-QUALITY FABRIC made from recycled plastics. The environmentally friendly version to contribute to a cleaner world.

Reduce impact with Style and transform the problem into a solution. Innovative textiles made from recycled materials.

# SERPENT BRA & LEGGING



MATERIAL:

83% RECYCLED POLYESTER - 17% SPANDEX

2/S 3/M 2/L



SKU: EV33BAL166 COLOR: Green  
SKU: EV83BAL166 COLOR: Green



SKU: EV33BAL162 COLOR: Charcoal  
SKU: EV83BAL162 COLOR: Charcoal

# GRAPHIC BRA & LEGGING



MATERIAL:

83% RECYCLED POLYESTER - 17% SPANDEX

2/S 3/M 2/L





# ALTHEA COLLECTION



MATERIAL:

83% RECYCLED POLYESTER - 17% SPANDEX

2/S 3/M 2/L



SKU: EV33BAL399 / EV83BAL399 COLOR: Pink



SKU: EV83BAL397 / EV33BAL397 COLOR: Red

# ALTHEA T-SHIRT

MATERIAL:

92% RECYCLED POLYESTER - 8% SPANDEX

2/S 3/M 2/L



SKU: EV73BAL811

COLOR: Black

# SERPENT BRA MOTION LEGGING

2/S 3/M 2/L



MATERIAL:  
83% RECYCLED POLYESTER - 17% SPANDEX



SKU: EV83BAL822 COLOR Charcoal







# RIBBED CROP TOP

MATERIAL:  
100% POLYESTER

2/S 3/M 2/L



SKU: EV43BAL746  
COLOR: Citrus Green



SKU: EV43BAL747  
COLOR: Wine



# POWERLOCK



MATERIAL:  
86% POLYESTER - 14% SPANDEX

OPEN SIZE

XS S M L XL

## SHORT



SKU: EV5BSUP001    COLOR: Black  
SKU: EV5BKAL001

## LEGGING



SKU: EV8BKAL001  
COLOR: Black

# SEASONAL T-SHIRT

MATERIAL:  
100% POLYESTER

OPEN SIZE

XS S M L XL



SKU: EV77HAL211  
COLOR: Black



**SKU: EV77HAL212 COLOR: Grey**



**SKU: EV77HAL214 COLOR: Blue**



**SKU: EV77HAL217 COLOR: Granadine**



**SKU: EV77HAL218 COLOR: White**



**SKU: EV77HAL219 COLOR: Pink**



**SKU: EV77HAL210 COLOR: Yellow**

# BASIC SEAMLESS BRA & LEGGING

MATERIAL: 92% NYLON - 8% SPANDEX

OPEN SIZE

S/M M/L



SKU: EV32QBL019 COLOR: Lilac  
SKU: EV8BQAL019 COLOR: Purple



SKU: EV32QBL011 COLOR: Black  
SKU: EV8BQAL011 COLOR: Black



SKU: EV32QBL012 COLOR: Charcoal  
SKU: EV8BQAL012 COLOR: Charcoal



# HEADBANDS

MATERIAL: 86% POLYESTER, 14% SPANDEX

ONE SIZE



SKU: EVBHB021 COLOR: Black  
SKU: EVBHB025 COLOR: Purple  
SKU: EVBHB026 COLOR: Green







# CROSS LEGGING

MATERIAL: 87% POLYESTER, 13% SPANDEX

2/S 3/M 2/L



SKU: EV82ABL779  
COLOR: Wine



SKU: EV82ABL771 COLOR: Black



SKU: EV82ABL773 COLOR: Aqua



# CROSS T-SHIRT

MATERIAL: 100% POLYESTER

**XL**



**SKU: EV72ABL819**  
**COLOR: Pink**



**SKU: EV72ABL811**  
**COLOR: Black**



**SKU: EV72ABL818**  
**COLOR: White**





# ZEPHYR BRA & LEGGING

MATERIAL: 86% POLYESTER - 14% SPANDEX

2/S 3/M 2/L



SKU: EV32ABL279 COLOR: Purple  
SKU: EV82ABL279 COLOR: Purple

# SWAY BRA

MATERIAL: 86% POLYESTER - 14% SPANDEX

2/S 3/M 2/L



SKU: EV32ABL341  
COLOR: Black



# RUFFLE LEGGING

MATERIAL: 87% POLYESTER - 13% SPANDEX

1/XS 2/S 3/M 1/L



SKU: EV82AAL902 COLOR: Charcoal



SKU: EV82AAL905 COLOR: Purple



# MELLOW LEGGING

MATERIAL: 87% POLYESTER - 13% SPANDEX

1/XS 2/S 3/M 1/L



SKU: EV82AAL645 COLOR: Nude

# ETHEREAL LEGGING

MATERIAL: 87% POLYESTER - 13% SPANDEX

1/XS 2/S 3/M 1/L



SKU: EV82AAL282 COLOR: Charcoal

# ETHEREAL TANK

MATERIAL: 48% MODEL 48%, RAYON 4%

3/S 3/M 1/L



SKU: EV42AAL332  
COLOR: Charcoal



# SERENE LEGGING

MATERIAL: 86% POLYESTER - 14% SPANDEX

1/XS 2/S 3/M 1/L



SKU: EV81AAL139  
COLOR: Lilac

# BASIC LEGGING

MATERIAL: 90% NYLON - 10% SPANDEX

OPEN SIZE

XS S M L XL



SKU: EV8BKAL001 COLOR: Black  
SKU: EV8BKAL003 COLOR: Navy

# HEADBANDS



## 1.5" HEADBAND

---

- SKU:** EVHB6C351 **COLOR:** Black
- SKU:** EVHB6C352 **COLOR:** Navy
- SKU:** EVHB6C353 **COLOR:** Royal Blue
- SKU:** EVHB6C354 **COLOR:** White
- SKU:** EVHB6C355 **COLOR:** Pink
- SKU:** EVHB6C356 **COLOR:** Purple



## 2" HEADBAND

---

- SKU:** EVHB6C501 **COLOR:** Black
- SKU:** EVHB6C502 **COLOR:** Navy
- SKU:** EVHB6C503 **COLOR:** White

# ACCESSORIES



## 2" WRISTBAND

---

- SKU:** EVWR6C201 **COLOR:** Black
- SKU:** EVWR6C202 **COLOR:** Navy
- SKU:** EVWR6C203 **COLOR:** Royal Blue
- SKU:** EVWR6C204 **COLOR:** White
- SKU:** EVWR6C205 **COLOR:** Pink
- SKU:** EVWR6C20 **COLOR:** Purple



## 1 cm HEADBAND SET

---

- SKU:** EVHB1300 **COLOR:** Black, Lime, Blue, Pink



**SWIMWEAR**



# IRON

MATERIAL: 80% NYLON - 20%SPANDEX

26 28 30 32 34 36 38



EV07HAL801  
COLOR: BLACK



EV07HAL803  
COLOR: NAVY



The Everlast logo is displayed in white on a dark grey rectangular background. It features the word "EVERLAST" in a stylized, bold, serif font, with a curved line underneath that forms a partial "E" shape.

EVERLAST®

WOMEN  
APPAREL

A woman with long, wavy blonde hair is wearing a black Everlast hoodie. She is looking directly at the camera with a neutral expression. The background is a textured, teal-colored wall. The word "EVERLAST" is printed in large, light blue letters across the chest of the hoodie.

EVERLAST

DEPORTIVA INTL. S.A.  
AN AUTHORIZED LICENSEE OF EVERLAST  
WORLDWIDE INC,  
Via España #14 Edificio Deportes Jimmy  
Panamá  
T (507) 300-3075  
F (507) 300-3082

[WWW.EVERLASTLATAM.COM](http://WWW.EVERLASTLATAM.COM)