



EVERLAST®

BOXING & MMA

**GREAT  
NESS  
IS  
WITH  
IN™**





# POWERLOCK

LOCK IN AND POWER ON

## TECHNOLOGY OF TOUGH

### EVERCOOL™

STAY COOL UNDER PRESSURE -The ventilation systems and breathable fabrics that compose EVERCOOL™ performance technology are the ultimate source of body temperature regulation.

### EVERFRESH™

SWEAT WITHOUT SMELLING LIKE IT -EVERFRESH™ antimicrobial treatment helps prevent offensive odors, keeping your products smelling fresh.

### EVERDRI™

BANISH SWEAT FROM YOUR BODY -The ultimate in moisture management, EVERDRI™ wicking optimizes your comfort and endurance levels.

### ISOPLATE

MAXIMUM IMPACT PROTECTION -Cushioning helps provide maximum impact protection for your hands, wrists, and shins during repetitive strikes. Features a vertically oriented foam-plated construction that provides maximum stability, impact, and ultimate comfort.

### EVERSHIELD

PROTECTION ENGINEERED -New shield design maintains a secure fit for advanced protection and comfort during training.

### FLEXCOOL™

REVOLUTIONIZE YOUR WRAPS -FLEXCOOL™ technical fabric stretches and flexes for the ultimate breathability and support.

### POWERLOCK

THE BALANCE OF POWER -POWERLOCK technology. Ergonomic layered foam construction that secures the hand into a natural fistposition. The perfect balance between power and protection.

### EVERGRIP™

DON'T DROP THE BALL -EVERGRIP™ synthetic technology designed for superior grip during the hardest workouts.

### EVERGEL™

STATE-OF-THE-ART PROTECTION -EVERGEL™ technology provides state-of-the-art cushioning and dissipates impact energy improving protection for hands, knuckles, and wrists.

### NEVATEAR™

ONE OPPONENT YOU CAN'T BEAT -NEVATEAR™ is a layered matrix of synthetic leather and webbed vinyl engineered to outlastthe heaviest hitters.

### EVERSTRIKE™

THE ULTIMATE OPPONENT FOR YOUR STRIKING ARSENAL -EVERSTRIKE™ technology is a woven textured matrix of lightweight synthetic material engineered for maximum durability to withstand the most powerful kicks, punches, and knees.

### POWERCORE™

STABILIZE YOUR WORKOUT -Centralized POWERCORE™ weight placement for maximized force dispersion.

### PROTEX²

REVOLUTIONARY WRIST PROTECTION -Designed for maximum wrist protection, PROTEX² features a two-ring anatomical foam collar system to stabilize the wrist comfort and protection no matter how hard you're hitting.

### C3 FOAM

POWER & PROTECTION IN EVERY PUNCH -The contoured, closed-cell C3 FOAM technology is designed with increased cushioning, support, and force dispersion.

### C4 FOAM

MORE POWER AND PROTECTION IN EVERY PUNCH -With an added layer of high-density foam, the contoured, closed-cell C4 technology provides greater cushioning, support, and force dispersion for superior protection during training.

### COMPRESS-X

STRENGTH THAT GOES THE DISTANCE -Designed to keep you stronger and drier longer, Compress-X firm fit lessens vibrations and reduces muscle fatigue by stimulating blood flow and curbing lactic acid build up.



# TRAINING GLOVES



## POWERLOCK2 TRAINING GLOVES

Synthetic PU Leather ensuring long-lasting durability and performance.  
 Quad Layered Foam Core provides mid level impact absorption.  
 Ergonomic Grip bar enables proper fist position while striking to prevent injuries.  
 Full Mesh Palm for maximum temperature control during intense workouts.  
 "Turnback" Hook&Loop Enclosure provides a fully adjustability wrist strap with maximum support.  
 Ergonomically secured thumb helps protect and prevent injuries.  
 Polyester foam interior lining for an extremely comfortable fit and feel.

|                |                     |                     |                     |
|----------------|---------------------|---------------------|---------------------|
| A) BLACK       | SKU: P00002284 12oz | SKU: P00002285 14oz | SKU: P00002286 16oz |
| B) WHITE       | SKU: P00002289 12oz | SKU: P00002290 14oz |                     |
| C) CHARCOAL    | SKU: P00002305 12oz | SKU: P00002306 14oz | SKU: P00002307 16oz |
| D) RED         | SKU: P00002310 12oz | SKU: P00002311 14oz | SKU: P00002312 16oz |
| E) NEON YELLOW | SKU: P00002315 12oz |                     |                     |
| F) PURPLE      | SKU: P00002320 12oz |                     |                     |

Technologies: POWERLOCK

## POWERLOCK LEATHER BOXING SPEED BAG

Specifically engineered shape gives true and accurate rebounding  
 Reinforced seams and loops offer flexibility during use without breaking  
 Extra durable leather shell and latex bladder  
 Materials: Premium grade leather shell with latex bladder

SKU: P00002723 Color: Black

Technologies: POWERLOCK



# TRAINING GLOVES



## POWERLOCK2 TRAINING GLOVES

Synthetic PU Leather ensuring long-lasting durability and performance.  
Quad Layered Foam Core provides mid level impact absorption.  
Ergonomic Grip bar enables proper fist position while striking to prevent injuries.  
Full Mesh Palm for maximum temperature control during intense workouts.  
“Turnback” Hook&Loop Enclosure provides a fully adjustability wrist strap with maximum support.  
Ergonomically secured thumb helps protect and prevent injuries.  
Polyester foam interior lining for an extremely comfortable fit and feel.

---

### BLACK / GOLD

P00002662 **120Z**

P00002664 **140Z**

P00002665 **160Z**

P00002661 **100Z**

### WHITE / GOLD

P00003050 **140Z**

P00003051 **160Z**

P00003048 **100Z**



## CORE TRAINING GLOVES

Synthetic PVC leather ensuring long lasting durability and performance at a great price. Light weight dual layered foam provides you with the protection needed while learning the basics of boxing without weighing your hands down.

Ergonomic grip bar enables the proper fist position while striking to prevent injuries.

Full wrist-wrap hook & loop enclosure provides a secure and customizable fit.

Ergonomically secured thumb helps protect and prevent injuries.

Polyester/nylon blended interior lining makes for easy cleaning and maintenance.

WHITE SKU: P00002325 S/M SKU: P00002326 L/XL  
BLACK SKU: P00002327 S/M SKU: P00002328 L/XL



# CORE

START YOUR JOURNEY



## BOXING GLOVES CORE

Full mesh palm ensures breathability and comfort.

Anti-microbial treatment fights offensive odors and bacterial growth, keeping your products safe and smelling fresh. Premium neoprene material combined with superior glove construction provides lasting durability and functionality. Lightweight design offers speed and power. Ideal for mitt work, heavy bag workouts, and reflex bag workout.

Technologies: EVERGEL™

SKU: P00002674



## GLOVES COACH CORE

Moisture-absorbing and antimicrobial lining retains freshness and fights bacterial growth extending the life of your boxing equipment. Mesh back ensures breathability and comfort, Mantis shape and padded wrist support provide superior hand safety and comfort, Mantis Punching Mitts are used primarily for coaching and mitt work.

SKU: P00002673



## CORE HEAD GEAR

Head protector with cheek protection, resists moisture while providing optimal resistance. The lightweight foam provides a perfect balance between protection and mobility. Secure fit, easy to put on and take off.

SKU: P00002676



## SPARK 'SPECIAL EDITION' TRAINING GLOVES

'SPECIAL EDITION' ANIMAL PRINT COLORWAYS.  
THE UPPER SECTION OF THESE GLOVES USE A SUEDE PU WITH PRINTED GRAPHICS TO GIVE THE GLOVE A SOFT FEELING.

**SIZE(S):** 10oz, 12oz, 14oz, 16oz

### DESIGN FEATURES:

Made of premium synthetic leather and suede for optimal durability.  
Injection molded foam core and ergonomic grip bar places hand in perfect punch position.  
Expandable polyurethane foam creates the ideal balance of air and foam for maximum Protection against injuries.  
Evercool mesh palm for moisture and temperature control during intense workouts.  
Hook-and-loop closure for highly customizable fit.  
Ergonomically secured thumb help prevent injuries.  
Polyester/nylon blended interior lining make for easy cleaning and maintenance.



LEOPARD

**SKU:** P00002995 12oz

**SKU:** P00002996 14oz



ZEBRA

**SKU:** P00002999 12oz





**ELITE**  
PROSTYLE TRAINING GLOVES



# TRAINING GLOVES



A)



B)



C)



D)



E)



F)



## ELITE PRO STYLE TRAINING GLOVES

Premium synthetic leather combined with excellent construction provides lasting durability.  
Full mesh palm ensures breathability and comfort.  
Updated EVERSIELD™ design for advanced wrist protection.  
Secure fit maintains protection and comfort during a variety of striking angles.

|                   |                     |                     |                     |
|-------------------|---------------------|---------------------|---------------------|
| A) BLACK          | SKU: P00002359 08oz | SKU: P00002360 10oz | SKU: P00002361 12oz |
|                   | SKU: P00002362 14oz | SKU: P00002363 16oz |                     |
| B) GREY           | SKU: P00002356 12oz | SKU: P00002357 14oz | SKU: P00002358 16oz |
| C) GOLD           | SKU: P00002349 08oz | SKU: P00002350 10oz | SKU: P00002351 12oz |
|                   | SKU: P00002352 14oz | SKU: P00002353 16oz |                     |
| D) NAVY           | SKU: P00002331 12oz | SKU: P00002332 14oz | SKU: P00002333 16oz |
| E) MILITARY GREEN | SKU: P00002341 12oz | SKU: P00002342 14oz | SKU: P00002343 16oz |
| F) FLAME RED      | SKU: P00002335 10oz | SKU: P00002336 12oz | SKU: P00002337 14oz |
|                   | SKU: P00002338 16oz |                     |                     |

Technologies: EVERSIELD™ EVERLASTWSD™  
EVERCOOL™

# TRAINING GLOVES



G)



## ELITE TRAINING GLOVES

Premium synthetic leather combined with excellent construction provides lasting durability.  
Full mesh palm ensures breathability and comfort.  
Updated EVERSIELD™ design for advanced wrist protection.  
Secure fit maintains protection and comfort during a variety of striking angles.

H)



G) WINE      **SKU:** P00002344 **08oz**      **SKU:** P00002345 **10oz**      **SKU:** P00002346 **12oz**  
                 **SKU:** P00002347 **14oz**      **SKU:** P00002348 **16oz**

H) PINK      **SKU:** P00001244 **08oz**      **SKU:** P00001196 **12oz**      **SKU:** P00SM10PK **10oz**

I) NAVY PINK **SKU:** P00SM10NA **10oz**      **SKU:** P00001195 **12oz**      **SKU:** P00SM14NA **14oz**

I)



Technologies: EVERSIELD™      EVERLASTWSD™  
   EVERCOOL™

# 1910 EDITION



## 1910 PRO SPARRING LACED TRAINING GLOVES

Ventilated palm improves air flow and comfort.  
Laser etched detailing.  
Genuine leather construction.  
Elevated take on a legendary glove.  
Padding and lush cushion interior.

BLACK    **SKU: P00001675** 14oz    **SKU: P00001676** 16oz



## 1910 CLASSIC TRAINING GLOVES (VELCRO)

Pro quality at retail price.  
Ventilated palm improves airflow and comfort.  
Laser etched detailing.  
Genuine leather construction.  
Classic construction with a modern fit.

|       |      |                       |      |                       |      |                       |
|-------|------|-----------------------|------|-----------------------|------|-----------------------|
| BROWN | 12oz | <b>SKU: P00002501</b> | 14oz | <b>SKU: P00002502</b> | 16oz | <b>SKU: P00002503</b> |
| RED   | 12oz | <b>SKU: P00001706</b> | 14oz | <b>SKU: P00001707</b> | 16oz | <b>SKU: P00001708</b> |
| BLACK | 12oz | <b>SKU: P00001709</b> | 14oz | <b>SKU: P00001711</b> | 16oz | <b>SKU: P00001713</b> |
| BLUE  | 12oz | <b>SKU: P00001714</b> | 14oz | <b>SKU: P00001715</b> | 16oz | <b>SKU: P00001698</b> |
| WHITE | 12oz | <b>SKU: P00001705</b> | 14oz | <b>SKU: P00001710</b> | 16oz | <b>SKU: P00001712</b> |





# COACH MITTS



## 1910 LEATHER MINI MITTS

Layered-foam construction provides added comfort and cushions the hardest punches.  
Easy slip-on, full-glove backing with adjustable hook- and-loopwriststraps.  
Constructed of premium Mexican leather that provides long-lasting durability and functionality.  
Handcrafted in Mexico for superior quality.

---

SKU: P00002120



## EVERLAST EVERGEL MANTIS MITTS

EVERGEL™ MANTIS PUNCH MITTS  
ENGINEERED FOR: MITT WORK

New state of the art gel material dissipates impact energy and protects hands during training.  
Moisture absorbing and anti-microbial treatment prevents offensive odors, keeping your products smelling fresh.  
New mesh back ensures breathability and comfort.  
Mantis shape and new padded wrist support combine to provide superior hand safety and comfort.

---

SKU: 4416GL

Technologies: EVERGEL™





## PUNCH MITTS

Lightweight EVERHIDE® material.  
Thick foam padding for protection and shock-absorption.  
Rear hand compartment for secure fit.

SKU: 4318 GY/BK

SKU: 4316 RD/BK

Technologies: EVERFRESH™



## BOXING FITNESS KIT

Kit includes one pair of Punch Mitts and one pair of Neoprene Heavy Bag Gloves. Punch mitts feature synthetic polycanvas with improved design to increase functionality with full glove backing. Premium neoprene material, along with superior glove construction, provides durability and functionality. Mesh palm ensures breathability and comfort, while a moisture-absorbing and anti-microbial lining retains freshness and extends the life of your equipment. One size fits most. Machine washable gloves.

SKU: 3010



## WRISTRAP HEAVY BAG GLOVES

Premium synthetic leather and superior glove construction provide lasting durability and functionality.  
Anti-microbial treatment fights offensive odors and bacterial growth, keeping your products safe and smelling fresh.  
Full wrist wrap strap enhances wrist support and allows for a more customizable fit.  
Ideal for mitt work and heavy bag workouts. 9 OZ.

SKU: 4301-SM SIZE: SM

Technologies: EVERFRESH™



## DOUBLE KICK PAD

This double sides target design is great for practicing high and low kicks, enhance your speed, accuracy and strength.

Comes with a heavy duty elastic wrist lanyard to stop the kick pad from dropping. Made of pu leather outside and high elastic compression sponge inside.

Perfect for taekwondo fans or other martial arts exerciser to train.

---

**SKU: EVTR7K15 - RD**

**SKU: EVTR7K15 - BK**



## LEATHER PUNCH PADDLES

- Multi-layered, C3 FOAM™ padding absorbs strikes during training.
- Unique grip allows a trainer to feel less impact on the hand and wrist.
- Ideal for practicing various strikes and punches.
- Premium leather construction.
- Sold in pairs.

---

**SKU: 2900000**

**TECHNOLOGY: C3 FOAM™**



# PROSPECT



## PROSPECT TRAINING GLOVES

The Prospect Training Gloves are built with multi-layered foam padding to ensure a safe contact point, a mesh palm for breathability and hook-and-loop wrist closure for wrist stability and a fast, secure fit.

SKU: P00001644 8oz

EVERCOOL™ EVERFRESH™



## PROSPECT MITT KIT

PROSPECT was designed to keep your young athlete protected and performing at their best. Built for boxing, kickboxing, MMA and martial arts. The Prospect Youth Boxing Kit includes 8oz Training Gloves & Punch Mitts designed with features & technology found in professional equipment and made of durable materials. Kit recommended for ages 5+.

The Prospect Training Gloves are built with multi-layered foam padding to ensure a safe contact point, a mesh palm for breathability and hook-and-loop wrist closure for wrist stability and a fast, secure fit.

SKU: P00001646



NEW

# PROSPECT

PROSPECT WAS DESIGNED TO KEEP YOUR YOUNG ATHLETE PROTECTED AND PERFORMING AT THEIR BEST. BUILT FOR BOXING, MMA, AND MARTIAL ARTS. ALL PRODUCTS ARE DESIGNED WITH THE FEATURES AND TECHNOLOGY FOUND IN PROFESSIONAL EQUIPMENT AND ARE MADE OF DURABLE MATERIALS.



## FULL SET BOXING PROSPECT

Youth training kit, promotes safe training and skills development.  
Excellent for developing coordination and fitness at an early age.  
Multi capable lightweight foam filled training gloves for added safety and comfort.  
Includes focus gloves for training boxing and kickboxing combinations.  
The headboard helps absorb shock and protects the head in the most sensitive areas.  
Velcro wrist strap helps for a very comfortable fit.  
Mesh palm allows for breathability.  
Fits young and old hands.  
Recommended for ages 5 and up.  
8oz glove.

SKU: P00001647

Technologies: EVERCOOL™ EVERFRESH™

# PROSPECT II



BLACK / GREY



RED / GOLD

## DESIGN FEATURES:

IMPROVED GLOVE DESIGN SPECIFICALLY TAILORED FOR YOUNGER HANDS  
SUPPLE PU SYNTHETIC LEATHER SHAPES AND MOVES FOR GREATER ARTICULATION  
MULTI LAYERED FOAM PADDING PROVIDES PROGRESSIVE PROTECTION FOR YOUNG HANDS  
MESH PALM CREATES IMPROVED COOLING AND AIRFLOW  
COMFORTABLE SOFT TOUCH LINING FOR CONFORMED, COMFORTABLE FIT  
FULL WRIST HOOK & LOOP CLOSURE SYSTEM FOR WRIST SUPPORT  
THUMB LOCK CONNECTION FOR SECURITY AND PROTECTION.

SIZE(S): 6OZ, 8OZ

YOUTH: (8-12) MARKET.

SKU: P00002972 8oz COLOR: Black / Grey

SKU: P00002974 8oz COLOR: Red / Gold



# PROSPECT II



## PROSPECT II YOUTH BOXING KIT

PROSPECT was designed to keep your young athlete protected and performing at their best. Built for boxing, kickboxing, MMA and martial arts. The Prospect Youth Boxing Kit includes 8oz Training Gloves & Punch Mitts designed with features & technology found in professional equipment and made of durable materials. Kit recommended for ages 5+.

SKU: P00003053 COLOR: Red / Gold



## PROSPECT II YOUTH HEAVY BAG

The polycanvas material shell is durable & gives the bag a perfect beginner level performance for prospects.

Premium jam & sand fill provides quality impact feedback & strike deadening  
Easy to hang 4-2-1 strap system with reinforced nylon to ensure strap longevity.  
Bottom bag anchor loop allows the use of ground tether or anchor for stabilization

SKU: P00003124 35LBS COLOR: Red / Gold



# HAND WRAPS



## 1910 HANDWRAPS

Wrap your hands in 180" of history and luxury with the Everlast 1910 Hand Wraps. The most comfortable wraps on the market, the Everlast 1910 Hand Wraps are made from a cotton blend material that provides optimal breathability and the perfect stretch for a highly customizable fit. The ergonomic thumb loop and hook-and-loop enclosure allows for maximum adjustability and security. A modern take on a classic line, the Everlast 1910 Hand Wraps are a must have for any fight connoisseur.

Made from premium cotton blend fabric for stretchy gauze like feeling  
Ergonomic thumb loop for a secure starting position  
Hook-and-loop enclosure for customizable and secure fit  
Classic black and white colorway with Everlast Authentic logo  
Machine washable  
Hand wraps should always be worn under gloves to help...

**180**  
INCHES

SKU: P00002270 BLACK 180"



## 108" HAND WRAPS 3 PACK

Provides breathable comfort and safety during training.  
Machine washable polyester / cotton blend material.

**108**  
INCHES

SKU: 4455-3



## PRINTED EVERGEL™ HANDWRAPS

ENGINEERED FOR: HEAVY BAG WORKOUT, REFLEX BAG WORKOUT, MITT WORKOUT  
Keep your hands cool and protected during your next MMA training session with these EVERGEL™ hand wraps from Everlast®.  
The EVERGEL™ material dissipates impact energy to protect your knuckles even in the most physical of workouts.

SKU: P00001248 **BLACK** **MEDIUM**  
SKU: P00001249 **BLACK** **LARGE**  
SKU: P00001250 **BLUE** **MEDIUM**  
SKU: P00001251 **BLUE** **LARGE**

Technologies: **EVERGEL™**

# HAND WRAPS



## 120" HAND WRAPS

ENGINEERED FOR: HEAVY BAG WORKOUT, SPEED BAG WORKOUT, CARDIO STRIKE  
120 inches of machine-washable poly-cotton blend keeps hands safe and wrists supported while training.  
Thumb loop ensures ease of use; hook-and-loop closure ensures secure fit.  
Compact 2" x 120" size.  
Contains two 120" hand wraps, one for each hand.  
Care instructions: machine wash, 100% cotton.

|           |        |
|-----------|--------|
| SKU: 4455 | BLACK  |
| SKU: 4455 | RED    |
| SKU: 4455 | PINK   |
| SKU: 4455 | PURPLE |
| SKU: 4455 | BLUE   |

**120**  
INCHES



## 180" HAND WRAPS

ENGINEERED FOR: HEAVY BAG WORKOUT, SPEED BAG WORKOUT, CARDIO STRIKE  
80 inches of machine washable cotton/spandex blend material provides breathable comfort and safety while training.  
Thumb strap ensures ease of use with a hook and loop closure for a secure fit.  
Anti-microbial treatment prevents offensive odors, keeping your products smelling fresh.  
Care instructions: machine wash, 100% cotton.

|           |          |
|-----------|----------|
| SKU: 4456 | BLACK    |
| SKU: 4456 | GOLD     |
| SKU: 4456 | RED      |
| SKU: 4456 | BLUE     |
| SKU: 4456 | WHITE    |
| SKU: 4456 | BURGUNDY |
| SKU: 4456 | GREY     |
| SKU: 4456 | PINK     |

Technologies: **EVERFRESH™**

**180**  
INCHES



# HAND WRAPS



## SPARK PRINTED HANDWRAPS

120" premium perfect stretch polyester woven fabric to ensure support and protection tapered thumb loop construction for a premium finish and unintrusive fit features a hook and loop closure system with woven end label provides maxziemburma adjustability and a secure closure.

.....

SKU: P00002919 LEOPARD

**120**  
INCHES



## 108" PRINTED HAND WRAP

The use of the hand wrap provides protection to the muscles, articulations and tendons.  
The hand wrap provides comfort and safety while training.  
Material: 80% cotton, 20% acrylic

.....

SKU: P00001216



SKU: P00001253



SKU: P00001252



**108**  
INCHES



**#TeamEverlast**

# HAND WRAPS



## PRO MMA 100" HAND WRAPS

ENGINEERED FOR: HEAVY BAG WORKOUT, THAI PAD WORKOUT  
100 inches of machine-washable cotton/spandex blend material provides breathable comfort and safety while training. Thumb loop ensures ease of use; hook-and-loop closure for a secure fit. Anti-microbial treatment fights bacterial growth, keeping your products safe and smelling fresh.

SKU: 4453-RD

Technologies: EVERFRESH™ EVERCOOL™



## FLEXCOOL™ 180" HANDWRAPS

180" of machine-washable, synthetic blend material that provides breathability and safety while training. FLEXCOOL™ material allows wraps to stretch and provides extra protection to the wrist, hands, and knuckles. Ventilated design for increased air flow and breathability. Thumb loop ensures ease of the hook-and-loop closure provides a secure fit.

SKU: 4458G GREY

Technologies: FLEXCOOL

# WRIST WRAPS



## NEOPRENE WEIGHTED GLOVE

Constructed from neoprene, these gloves are built to last and for optimum fit. The anatomic wrist wrap helps to secure the gloves and provide wrist stability.

SKU: EVWG61052 0.5KG X2



## EVERGEL HAND WRAPS

ENGINEERED FOR: HEAVY BAG WORKOUT, REFLEX BAG WORKOUT, MITT WORKOUT  
Light-weight design increases speed and accuracy, open-thumb for extra compact fist.  
Partial mesh palm ensures breathability and comfort while a moisture absorbing and anti-microbial lining retains freshness, extending the life of your equipment.  
Glove features a dual-collar support panel for superior wrist protection  
Adjustable Hook & Loop wrist strap secures the fit.

SKU: 4355

PINK TALLA: M

Technologies: EVERGEL



# PROTECTORS



## COACH VEST

Premium leather construction for ultimate durability. Contoured, closed-cell C3 FOAM technology is designed with increased cushioning, support, and ultimate force dispersion to protect the torso and abdomen from powerful punches and lower body combinations. EVERDRITM wicking lining optimizes comfort and repels excessive moisture during training. Includes adjustable padded shoulder straps for secure placement and comfort.

SKU: 532001

Technologies:



EVERDRITM



## C3 PRO KICK PAD

Multi-layered, dense C3 FOAM padding absorbs the heaviest kicks, knees, and strikes during training. Easy to maneuver for multiple target options. Premium leather construction for ultimate durability. Reinforced rivets and padded handles to withstand impact and sustain a secure grip. Dimensions: 24" x 18" x 5"

SKU: 712501

Technologies:



# MMA PROTECTORS



## THAI PADS

ENGINEERED FOR: MITT WORK, KICKING

Premium synthetic leather along with excellent glove construction, provides durability and functionality.

Authentic Thai design features dense foam padding for safety while

Blocking kicks, punches, elbows and knees.

---

**SKU:** 7517



## STRIKE SHIELD

Premium synthetic leather along with superior construction increases durability and functionality. Multiple straps increase shield functionality. High density foam for impact protection. Sold individually.

---

**SKU:** 7330B



## 1910 PRO HEADGEAR

Lightweight Foam provides a perfect balance of protection and movability Forehead / Crown guard with lace provides maximum adjustability for all head sizes without jeopardizing protection Hook & loop rear system provides a secure fit that's easy to slip on and off Buckle chin strap provides quick adjustment and a secure fit Cheek guards designed to provide the most amount of coverage protection with the widest range of visibility Integrated ear protection secures the ear within the headgear without affecting the ability to hear

SKU: P00002118 SIZE: S/M

SKU: P00002119 SIZE: L/XL



## ELITE HEADGEAR

Sparring head gear.  
Premium synthetic leather.  
Comfortable, dense foam padding

SKU: P00001211 M L

Technologies EVERSHIELD®



## EVERHIDE® HEAD GEAR

Lightweight Everhide® material Open face design with cheek protection.  
Adjustable head and chin straps for customized fit.

SKU: 4022

Technologies EVERFRESH™



## MMA HEADGEAR

ENGINEERED FOR: SPARRING  
Premium synthetic leather provides durability and functionality. Antimicrobial treatment prevents offensive odors, keeping your products smelling fresh.  
One size fits most.

SKU: 7420LXL

EVERFRESH™

# PROTECTORS



## PRO COMPETITION PROTECTOR

Flexible design offers increased mobility during competition. Dense, shock-absorbing C3 foam padding and cup provide maximum protection for the groin, hips, and kidneys. Premium leather construction provides lasting durability and functionality. EverDri wicking lining repels excessive moisture during training for comfortable wear. Adjustable hook & loop rear closure for secure placement while training.

SKU: 750001 **SMALL**  
SKU: 750201 **MEDIUM**  
SKU: 760201 **LARGE**



EVERDRI™



## LIGHTWEIGHT SPARRING PROTECTOR

Flexible design allows fighter increased mobility during competition. Premium leather construction provides long-lasting durability and functionality. Features elastic waist band with adjustable hook-and-loop rear closure for secure placement and comfort during training.

SKU: 760001 **SMALL**  
SKU: 760401 **LARGE**



EVERDRI™



# MOUTHGUARDS



## SINGLE MOUTH GUARD

ENGINEERED FOR: SPARRING

Boil and bite design allows for custom molding of mouthguard to maximize protection & comfort.

**SKU: 4405**   **BLACK / CLEAR / PINK**



## 2 TONE SINGLE MOUTHGUARDS

ADULT SIZE

**SKU: EVMG12T-OR/WT**   **ORANGE / WHITE**

**SKU: EVMG12T-BL/WT**   **BLUE / WHITE**

**SKU: EVMG12T-GN/WT**   **GREEN / WHITE**

JUNIOR SIZE

**SKU: EVMG12TY-OR/WT**   **ORANGE / WHITE**

**SKU: EVMG12TY-BL/WT**   **BLUE / WHITE**



## 2 TONE DOUBLE

ADULT SIZE

**SKU: 44102T-ORWT**   **NEON ORANGE / WHITE**

**SKU: 44102T-RYWT**   **ROYAL BLUE 2935C / WHITE**



## 2 TONE SINGLE JR

**SKU: 44052TY**   **ORANGE / WHITE**   **ROYAL / WHITE**



## DOUBLE MOUTH GUARD

ENGINEERED FOR: SPARRING

Boil-and-bite design allows for custom molding of mouth guard to maximize protection and comfort.

Center breath channel allows for un obstructed air flow.

**SKU: 4410**   **BLACK**

**SKU: 4410**   **CLEAR**

# MOUTHGUARDS



## EVERGEL™ MOUTHGUARD

ENGINEERED FOR: SPARRING

Three layer mouth guard construction includes a soft gel inner layer, a shock absorbent Middle layer, surrounded by a more rigid outer shield for ultimate impact protection. Boil and bite design provides custom molds for a tight, comfortable fit.

Includes plastic mouth guard case for clean and secure storage.

SKU: 1400008 **BLUE / BLACK**

SKU: 1400009 **GREEN / GREY**

Technologies: **EVERSHIELD**

**3 LAYERS OF PROTECTION**



## EVERSHIELD DOUBLE MOUTHGUARD

ENGINEERED FOR: SPARRING

Three layer mouth guard construction includes a soft gel inner layer, a shock absorbent Middle layer, surrounded by a more rigid outer shield for ultimate impact protection.

Boil and bite design provides custom molds for a tight, comfortable fit.

Includes plastic mouth guard case for clean and secure storage.

SKU: 1400007 **RED**

SKU: 1400006 **PINK**

SKU: 1400004 **GREY**

**2 LAYERS OF PROTECTION**



Technologies: **EVERSHIELD**



## EVERSHIELD SINGLE MOUTHGUARD

ENGINEERED FOR: SPARRING

Two layer mouth guard construction includes a shock absorbent inner layer surrounded by a more rigid outer shield for impact protection. Boil and bite design provides custom molds for a tight, comfortable fit. Includes plastic mouth guard case for clean and secure storage.

SKU: 1400003 **RED**

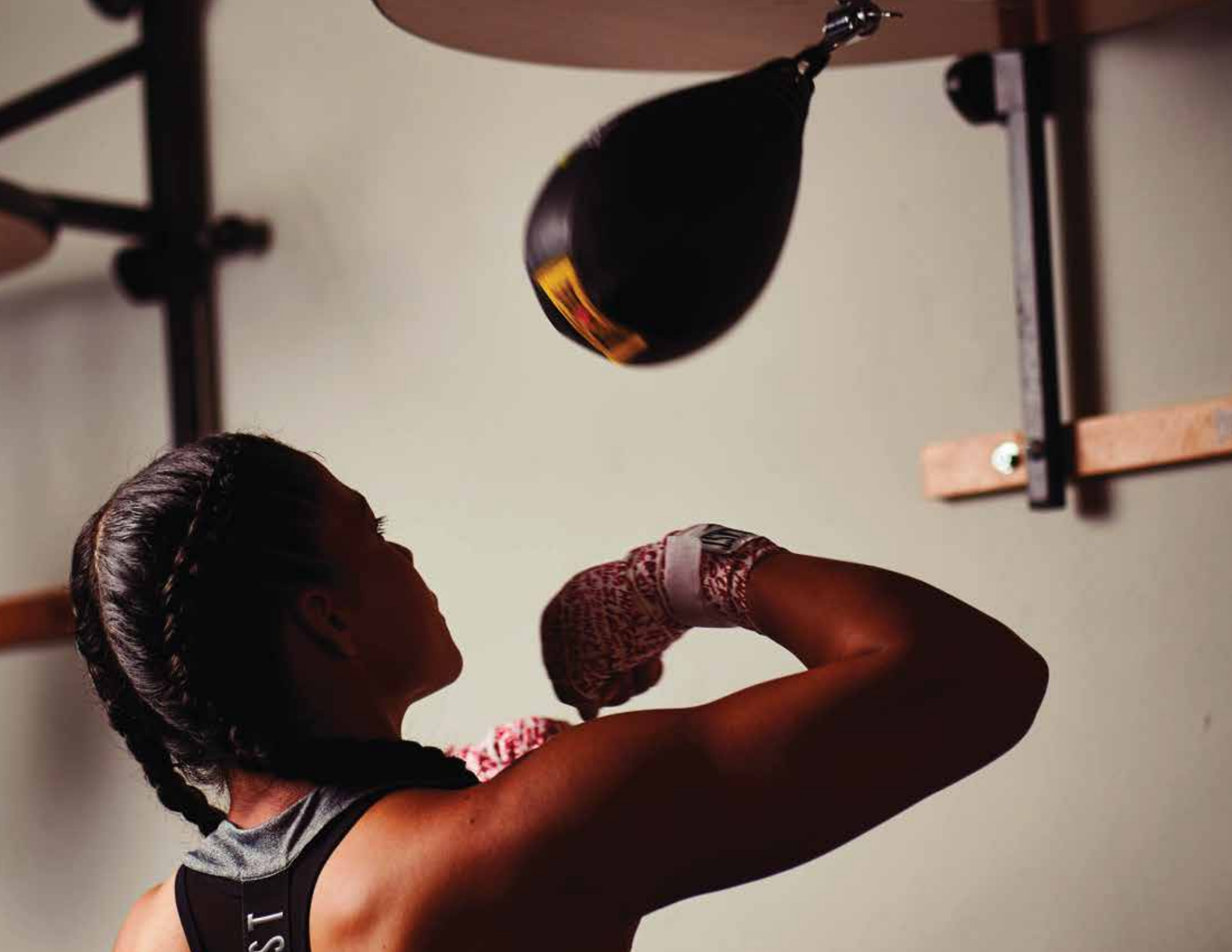
SKU: 1400002 **PINK**

SKU: 1400000 **GREY**

**1 LAYERS OF PROTECTION**



Technologies: **EVERSHIELD**



# SPEED BAGS



## 1910 LEATHER SPEED BAG

Full Grain Leather provides maximum durability and performance  
Reinforced hanging loop ensures durability and easy movement  
Latex air bladder allows for the effective performance and rebound rates  
Reinforced rope closure Bottom mounted air valve for easy inflation  
Satin dust cover for clean storage included

SKU: P00002114 Color: BLACK M 9"x6"



## EVERHIDE SPEED BAG

Premium synthetic leather, along with excellent construction, provides durability and functionality. Balanced for accurate rebounds while training.

SKU: 4241 M 9"x6"



## EVERHIDE SPEED BAG

Premium synthetic leather, along with excellent construction, provides durability and functionality. Balanced for accurate rebounds while training.

SKU: 4215 MEDIUM



## ADJUSTABLE SPEED BAG PLATFORM

Easily adjust speed bag platform to ideal height for any athlete.  
Platform includes swivel, two brace boards, assembly hardware, and full rubber edge binding for safety.  
Compatible with double-end bags and double-end anchor.  
Adjustable speedbag boxing platform for speed bag workouts.  
8" adjustable in 1" increments.  
24" Diameter x 1" pressboard.

SKU: 4264



## WOOD BEAM HEAVY BAG HANGER

Solid steel material ensure safety and stability when hanging up your heavy bag.  
360° rotation for full range of movement.  
Powder-coated steel for superior durability.  
Wood screws included for easy attachment to wood beams.

SKU: 4680U



## EVERHIDE DOUBLE-END STRIKING BAG

ENGINEERED FOR: BAG/MITT WORKOUTS  
Premium synthetic leather, along with excellent construction, provides durability and functionality.  
Extended attachment straps with closed loops prevent glove damage. Compatible with speed bag platforms and double-end attachments.  
Bungee cords and ceiling/floor plates included.

SKU: 4223



# ACCESORIES



## DOUBLE-END ANCHOR

Stabilize your heavy bag with 45 lbs. of water. Bungee cord included. Premium synthetic leather with reinforced webbing provides long lasting durability and functionality. Also can be used for double-end striking bags.

SKU: DE01



## GLOVE BAG

Durable drawstring bag comfortably holds any size training gloves. Features front pocket for hand wraps or mouth guard and a mesh water bottle holder. Combines Everfresh antimicrobial and Evercool ventilation technologies to prevent odor causing bacterial growth on training gear. Comes packaged on a hang card.

SKU: 420D      EVERCOOL™   EVERFRESH™

# ACCESORIES



## UNIVERSAL HEAVY BAG HANGER

Rubberized interior surface prevents sleeve rotation.  
Embedded steel supports increase stability and heavy bag strength.  
Heavy-duty nylon straps provide security and safety.

---

**SKU:** 4683



## HEAVY BAG BRACKET WITH PULL UP BAR

ENGINEERED FOR: HEAVY BAG WORKOUT  
Heavy duty, powder-coated steel  
Dual mounting system for easy wall attachment easy installation  
Pull-up station more than just a heavy bag hanger, it features a pull up bar  
For chin ups that is 1 ¼" in diameter for a comfortable grip and a more complete workout.  
Can support bag up to weight capacity: 60-70kgs (285 lbs)

---

**SKU:** EVHB7R204



## F.I.T. SHADOW BOXER

The F.I.T. Shadow Boxer is designed to help develop speed, power, and explosiveness for boxing, MMA, and all fight sports.  
Designed with foam-covered back support and handles for safety and comfort, and double-resistance tubes to help increase strength in arms and shoulders.

---

**SKU:** P00000789

# ACCESORIES



## BATTLING ROPES

ENGINEERED FOR: TOTAL BODY CONDITIONING, STRENGTH, CARDIOVASCULAR TRAINING  
Improved grip strenght 1.5" diameter x 45` lenght rope. Durable synthetic blend with rubberized handles.

SKU: EVBR9W623



## LOWER BODY POWER BANDS

ENGINEERED FOR: LATERAL RESISTANCE, LOWER BODY STRENGTH TRAINING, IMPROVING FOOTWORK  
Two padded hook-and-loop ankle straps provide comfort and Stability during training.  
Removable gray elastic band designed to discipline footwork and Athletic stance provides resistance up to 25 lbs  
Removable red elastic band, designed to strengthen knee strikes And kicks, provides resistance up to 15 lbs.

SKU: 6350RG



## ACCESORIES



### WEIGHTED JUMP ROPE

ENGINEERED FOR: SPEED, ENDURANCE, AGILITY, COORDINATION, TOTAL BODY CONDITIONING

Perfect for fitness workouts, cardio training, jumping exercise, CrossFit, Skipping, speed training, calves, thigh and forearm strengthening, leg training and endurance training. Ergonomically design weighted memory foam handles offer extra comfort while also preventing palm sweat and providing a firm grip.  
Weights in jump rope handles are removable.

---

SKU: EVJROW38W



### EVERGRIP WEIGHTED JUMP ROPE

ENGINEERED FOR: SPEED, ENDURANCE, AGILITY, COORDINATION, TOTAL BODY CONDITIONING  
Adjustable length, 9 ft. plastic speed rope.  
EverGrip™ handles provide added grip while training.  
Removable weights to challenge your cardio and upper body training.  
1.5 lbs. maximum removable weights  
Precision ball bearing rotation for increased speed.

---

SKU: 4485





# HEAVY BAGS



SKU: P00001912-BL/SL 80LB



SKU: P00002259 70/80LB



SKU: P00001272 80LB



SKU: P00001269 80LB



SKU: P00001221 40LB  
SKU: P00001260 70/80LB  
SKU: P00001258 100LB

## ELITE PROSTYLE HEAVY BAG

Heavy bagheavy bag is created with a specially blended filler mix of sanitized synthetic and natural fibers provides resilient shock absorbency.  
Premium polycanvas material with reinforced webbing provides functionality and durability.  
Heavy duty straps provide security and safety.  
Double-end loop provides increased functionality & resistance.

Technologies: NEVATEAR™

# HEAVY BAGS



SKU: P00001267 60LB  
SKU: P00001219 70LB



SKU: P00001264 40LB  
SKU: P00001262 70/80LB  
SKU: P00001217 100LB



SKU: P00001260-BL 70/80LB



SKU: P00001258-BL 100LB



SKU: P00001264-RD 40LB  
SKU: P00001258-RD 100LB  
SKU: P00001260-RD 70/80LB

## ELITE PROSTYLE HEAVY BAG

Heavy bagheavy bag is created with a specially blended filler mix of sanitized synthetic and natural fibers provides resilient shock absorbency.

Premium polycanvas material with reinforced webbing provides functionality and durability.

Heavy duty straps provide security and safety.

Double-end loop provides increased functionality & resistance.

Technologies: NEVATEAR™

# HEAVY BAGS



## SHELL PLATINUM / BLUE HEAVY BAG

Durable polycanvas wrap filled with closed cell foam technology provides increased cushioning and force dispersion while its resilient design maintains bag integrity. Specially blended filler mix of sanitized synthetic and natural fibers provides resilient shock absorbency. Heavy-duty straps provide security and safety, while the double-end loop provides increased functionality.

SKU: P00002081 70/80LB



## SHELL PLATINUM / RED HEAVY BAG

Durable polycanvas wrap filled with closed cell foam technology provides increased cushioning and force dispersion while its resilient design maintains bag integrity. Specially blended filler mix of sanitized synthetic and natural fibers provides resilient shock absorbency. Heavy-duty straps provide security and safety, while the double-end loop provides increased functionality.

SKU: P00002075 60LB



## SHELL PLATINUM / PINK HEAVY BAG

Durable polycanvas wrap filled with closed cell foam technology provides increased cushioning and force dispersion while its resilient design maintains bag integrity. Specially blended filler mix of sanitized synthetic and natural fibers provides resilient shock absorbency. Heavy-duty straps provide security and safety, while the double-end loop provides increased functionality.

SKU: SH4004WB-PK 40LB



# HEAVY BAGS



## C3 FOAM HEAVY BAG

Durable polycanvas wrap filled with closed cell foam technology provides increased cushioning and force dispersion while its resilient design maintains bag integrity. Specially blended filler mix of sanitized synthetic and natural fibers provides resilient shock absorbency. Premium NEVATEAR™ with reinforced webbing along with excellent construction provides durability and functionality. Heavy-duty straps provide security and safety, while the double-end loop provides increased functionality.

SKU: SH4768WB 100LB

Technologies: NEVATEAR™



## CARDIOBLAST HEAVY BAG

ENGINEERED FOR: CARDIO BOXING WORKOUT CardioBlast combines a lightweight technical outer shell with impact dispersing stuffing for the ultimate in dynamic cardio training. Premium synthetic leather with reinforced webbing along with excellent heavy bag construction provides durability and functionality. Designed without sand bags to create softer feel for cardio and conditioning work. Longer bag length (40") to accommodate punches, knees, and kicks. EVERSTRIKE™ technology is a woven textured matrix of lightweight synthetic material engineered for maximum durability.

SKU: SH4904BWB PK  
SKU: SH00002 GR/LI

Technologies: EVERSTRIKE™



## POWERCORE NEVATEAR HEAVY BAG

ENGINEERED FOR: HEAVY BAG WORKOUT Metal rivets endure strap security; center-aligned sandbag placement system ensures maximum force dispersion and hand safety. Specially blended filler mix of sanitized synthetic and natural fibers provides resilient shock absorbency. Premium NEVATEAR with reinforced webbing along with excellent construction provides durability and functionality. Heavy-duty straps provide security and safety, while the double-end loop provides increased functionality.

SKU: SH5800WB 100LB  
SKU: SH5808WB 80LB

Technologies: NEVATEAR™  
POWERCORE™



## POWERSHOT HEAVY BAG

ENGINEERED FOR: CARDIO BOXING WORKOUT Strategically placed targets to generate powerful and precise head & body shots. Combination of C3 FOAM and EVERGEL Powershot cushioning targets to protect hands, knuckles and wrists. Specially blended filler mix of sanitized synthetic and natural fibers provides resilient shock absorbency. Premium NEVATEAR with reinforced webbing, along with excellent heavy bag construction, provides durability and functionality. Heavy-duty straps provide security and safety, while the double-end loop provides increased functionality.

SKU: SH6900RBWB 100 LB GEL  
SKU: SH6908RBWB 80 LB GEL

Technologies:



# HEAVY BAGS



## NEVATEAR HEAVY BAG

ENGINEERED FOR: HEAVY BAG WORKOUT  
Specially blended filler mix of sanitized synthetic and natural fibers provides resilient shock absorbency. Premium NEVATEAR™ with reinforced webbing along with excellent construction provides durability and functionality. Heavy-duty straps provide security and safety, while the double-end loop provides increased functionality.

SKU: SH4000WB 100 LB 13"X46"  
SKU: SH4000WB-RD 100 LB 13"X46"

Technologies: NEVATEAR™

## NEVATEAR HEAVY BAG

ENGINEERED FOR: HEAVY BAG WORKOUT  
Specially blended filler mix of sanitized synthetic and natural fibers provides resilient shock absorbency. Premium NEVATEAR™ with reinforced webbing along with excellent construction provides durability and functionality. Heavy-duty straps provide security and safety, while the double-end loop provides increased functionality.

Technologies: NEVATEAR

SKU: SH4004WB 40 LB 12"X28"  
SKU: SH4004WB-RD 40 LB 12"X28"  
SKU: SH4006WB 60 LB 13"X34"  
SKU: SH4006WB-RD 60 LB 13"X34"  
SKU: SH4007WB 80 LB  
SKU: SH4007WB-PK 80 LB  
SKU: SH4007WB-RD 80 LB

## HEAVY BAG

ENGINEERED FOR: HEAVY BAG WORKOUT  
Specially blended filler mix of sanitized synthetic and natural fibers provides resilient shock absorbency. Premium NEVATEAR™ with reinforced webbing along with excellent construction provides durability and functionality. Heavy-duty straps provide security and safety, while the double-end loop provides increased functionality.

SKU: P00000342 40 LB 12"X28"

## 1910 HEAVY BAG

ENGINEERED FOR: HEAVY BAG WORKOUT  
Specially blended filler mix of sanitized synthetic and natural fibers provides resilient shock absorbency. Premium NEVATEAR™ with reinforced webbing along with excellent construction provides durability and functionality. Heavy-duty straps provide security and safety, while the double-end loop provides increased functionality.

SKU: SH1907WB 70/80 LB 13"X40"  
SKU: SH1910WB 100 LB

# HEAVY BAGS



## NEVATEAR HEAVY BAG

ENGINEERED FOR: HEAVY BAG WORKOUT  
Specially blended filler mix of sanitized synthetic and natural fibers provides resilient shock absorbency.  
Premium NEVATEAR™ with reinforced webbing along with excellent construction provides durability and functionality. Heavy-duty straps provide security and safety, while the double-end loop provides increased functionality.

---

SKU: P00001454 80LB

Technologies: NEVATEAR™



## PLATINUM NEVATEAR HEAVY BAG

ENGINEERED FOR: HEAVY BAG WORKOUT  
Specially blended filler mix of sanitized synthetic and natural fibers provides resilient shock absorbency.  
Premium NEVATEAR™ with reinforced webbing along with excellent construction provides durability and functionality. Heavy-duty straps provide security and safety, while the double-end loop provides increased functionality.

---

SKU: SH5260WB 60LB 13"X34"

SKU: SH4107WB 80 LB



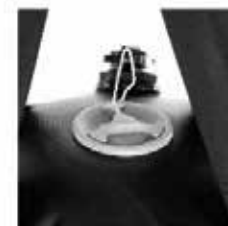
## POLYCANVAS HEAVY BAG

ENGINEERED FOR: HEAVY BAG WORKOUT  
Specially blended filler mix of sanitized synthetic and natural fibers provides resilient shock absorbency.  
Premium NEVATEAR™ with reinforced webbing along with excellent construction provides durability and functionality. Heavy-duty straps provide security and safety, while the double-end loop provides increased functionality.

---

SKU: SH4657WB 70 LB

# HYDROSTRIKE



## HYDROSTRIKE AIR CORE HEAVY BAG, 100LBS

The Everlast Hydrostrike Air Core Heavy Bag is the next generation Everlast Hydrostrike bag.

Combining the versatility of water and air this bag can be set up and taken down with ease. Individual inner air compartment creates a traditional heavy bag shape while the outer water compartment provides an adjustable weight up to 100lbs with optimal...

SKU: P00002820 100LB Color: Black



# HEAVY BAGS



## DIGITAL CAMO HEAVY BAG

### ENGINEERED FOR: HEAVY BAG WORKOUT

Specially blended filler mix of sanitized synthetic and natural fibers provides resilient shock absorbency.

Premium NEVATEAR™ with reinforced webbing along with excellent construction provides durability and functionality.

Heavy-duty straps provide security and safety, while the double-end loop provides increased functionality.

---

**SKU: SH6108WB 80LB CAMOUFLAGE**



## M. HOOK BAG

Includes triple-reinforced ring tabs to ensure maximum toughness and heavy bag durability at the top of the bag. Complete with chain.

---

**SKU: SH270001 50 LB**



# STANDS



## HEAVY BAG STAND

### ENGINEERED FOR: HEAVY BAG WORKOUT

Heavy duty, powder coated steel tubing combined with 3 weight plate pegs for maximum strength and durability.  
Easy to assemble and will accommodate any heavy bag up to 100 lbs.  
Footprint: 69" L x 48.25" W; 84.13" tall.

SKU: 4812G



## HEAVY BAG / SPEED BAG STAND

### ENGINEERED FOR: HEAVY BAG WORKOUT

Heavy duty, powder coated steel tubing combined with 3 weight plate pegs for maximum strength and durability.  
Easy to assemble and will accommodate any heavy bag up to 100 lbs.  
Adjustable height speed bag platform handles all speed bag sizes.  
Footprint: 69" L x 48.25" W; 84.13" tall.

SKU: 4813EV









# MMA HEAVY BAGS



## MMA POLYCANVAS HEAVY BAG

Specially blended filler mix of sanitized synthetic and natural fibers provides resilient shock absorbency. Premium polycanvas along with excellent heavy bag construction provides durability. Heavy-duty straps provide security and safety, while the double-end loop provides increased functionality. 40" high.

SKU: MMA4657WB - BK 70LB  
MMA4657WB - RD 70LB



## MUAY THAI HEAVY BAG

Thin profile for improved punch and kick accuracy.  
5'6" tall / 160 CM  
Includes floor and ceiling fixtures.

SKU: SH4908WB 80LB



## OMNISTRIKE™ HEAVY BAG

C3 FOAM wrapped bottom panel sustains low kicks and ground and pound. Knee Strike handles simulate the Thai clinch while training. Premium synthetic leather along with superior punching bag construction increases durability and functionality. Ideal for heavy bag workouts and ground & pound. Weighs 80lbs; approximately 49" in height with a 15.5" diameter.  
Not recommended for outside use.

SKU: SHMMA4788WB 80LB

Technologies: NEVATEAR™  
C3 FOAM



## NEVATEAR DOUBLE-ENDED HEAVY BAG

Double Ended Nevatear® shell with screened-on Everlast logos. Stuffed with a custom filling of sifted sand and machined and natural fibers for consistent feel. Includes chain assembly.

SKU: SH7707DEWB 70LBS



## TEARDROP HEAVY BAG

Authentic Muay Thai teardrop shape provides a lower gravitational pull on the bag making it ideal for knee strikes and clinches.  
Triple stitched panel construction Durable

SKU: SH4765WB 65LB



# CORE



## CORE EVERSTRIKE GLOVES

Designed to be a true cross function glove; strike, lift, push, jump rope, drink and interact with your device all without removing or changing gloves thick knuckle padding for protection during striking durable microfiber palm with ventilation for abrasion protection during lifting double wrap, compression closure strap provides wrist protection and support quickly banish sweat during the hard workouts with the towel thumb high flex panel allows better articulation and fit finger pull tabs make removing the gloves easy even when sweaty.

SKU: P00002938 **BLACK M**

SKU: P00002939 **BLACK L**

SKU: P00002944 **RED M**

SKU: P00002945 **RED L**

SKU: P00002950 **PINK M**

# MMA GLOVES



## EVERSTRIKE MULTI-PORPUSE GLOVE

Training Gloves are versatile gloves ideal for MMA training that allows easy transition from cardio workouts to heavy bag training or mitt work. Made of premium synthetic leather and cushioned foam that dissipates the impact of strikes, keeping your hands and knuckles safe. The reinforced fifth metacarpal padding minimizes hand trauma. Features: Made of premium synthetic leather EverCool ventilation system EverDri keeps hands dry and comfortable Foam padding and reinforced fifth metacarpal Ideal for MMA training available in 4 color combinations and sizes M/L, L/XLs

SKU: P00000660 PINK / BLACK S/M  
SKU: P00000661 WHITE / GOLD S/M  
SKU: P00000662 GREY / BLACK M/L - L/XL  
SKU: P00000663 BLACK / GOLD M/L - L/XL

EVERDRI™  
EVERCOOL™



## MMA KICKBOXING GLOVES

Full wrist wrap strap provides superior wrist support and allows for a more customizable fit. Full mesh palm ensures breathability and comfort. New MMA glove design with extended knuckle padding protects fingers while training, with synthetic leather construction for durability. Ideal for heavy bag workouts and Thai pad workouts. 5 OZ.

SKU: 4402B EVERCOOL™ EVERFRESH™



## MMA GRAPPLING GLOVES

Premium synthetic leather provides long lasting durability and functionality. Full wrist wrap strap provides superior wrist support and allows for a more customizable fit. New design with refined glove shape for improved finger flexibility and hand protection. Articulated finger ridges for ease of movement. Used for grappling and mitt work.

SKU: 7560 BLACK / BLUE / RED EVERFRESH™

TALLA: SM - L XL



## EVERCOOL KICKBOXING GLOVES

ENGINEERED FOR: KICKBOXING, HEAVY BAG WORKOUT, MITT WORK  
Full wrist wrap strap provides superior wrist support and allows for a more customizable fit. New full mesh palm ensures breathability and comfort. New design with extended knuckle padding protects fingers while training with neoprene construction for comfort.

SKU: 4403P EVERCOOL™

# MMA GLOVES



## WRIST STRAP HEAVY BAG GLOVES

ENGINEERED FOR: HEAVY BAG WORKOUT, REFLEX BAG WORKOUT, MITT WORKOUT Premium synthetic leather along with excellent glove construction provides long lasting, durability and functionality Anti-microbial treatment fights bacterial growth keeping your products safe and smelling fresh. Full wrist strap provides superior wrist support and allows for a more customizable fit.

SKU: 4301-S / M

TECHNOLOGY: EVERFRESH™



## PRO STYLE GRAPPLING GLOVES

Premium synthetic leather along with superior glove construction increases durability and functionality. Full wrist wrap strap enhances wrist support and allows for a more customizable fit. New design with refined MMA grappling glove padding silhouette and a more ergonomic fist shape for improved comfort and flexibility. Ideal for grappling and mitt work. 4 OZ.

7778 BLACK L / XL

7778 PINK S / M

7778 RED L / XL

TECHNOLOGY: EVERDRI™



## MMA POWERLOCK FIGHT GLOVES

Promotes proper hand form and technique to reduce the risk of face, hand and wrist injuries. Unique design includes a curved striking surface to maximize hand protection at the impact zone. Features Powerlock technology, a defined anatomical foam construction that guides your hand into a natural fist position. Made from high-quality leather to increase durability and functionality.

SKU: 7674 - L / XL

TECHNOLOGY: POWERLOCK C4 FOAM



## CORE KICKBOXING GLOVES

SKU:P00002933 S/M

SKU:P00002934 L/XL



# MMA GLOVES



## TRAINING STRIKING GLOVES

Premium synthetic leather provides long lasting durability and functionality.  
Full wrist wrap strap provides superior wrist support and allows for a more customizable fit.  
Better design with refined padding provides a more ergonomic fist shape for improved knuckle protection.  
Used for sparring, mitt work, and ground and pound.

SKU: 7773 - S / M / L / XL

Technologies: EVERFRESH™



## TRAINING GRAPPLING GLOVES

Perfect your grappling and takedowns with the Everlast MMA Grappling Training Gloves.  
These gloves allow fighters unparalleled finger flexibility and hand protection.  
Premium synthetic leather provides long lasting durability and functionality while full wrist wrap-strap provides superior wrist support and allows for a more customizable fit.  
Articulated finger ridges permit for ease of movement.  
The Everlast MMA Grappling Training Gloves are the ideal glove for grappling and light mitt work.  
Made from premium synthetic leather - Full wrist wrap-strap for customizable fit - Articulated finger ridges for ease of movement - Ideal finger flexibility and hand protection - Used for grappling and mitt work

SKU: 7772 - S / M

TECHNOLOGY: EVERFRESH™



## COMPETITION STYLE MMA GLOVES

Features EVERSIELD technology, a new shield design that provides a secure fit around the wrist for advanced protection and comfort Unique design includes a curved striking surface to maximize hand protection at the impact zone.  
Premium synthetic leather provides ultra-soft feel and long-lasting durability.

SKU: P00000158-RD RED

SKU: P00000159 BLACK LARGE / EXTRA LARGE

SKU: P00000159-RD RED

Technologies:  
EVERSHIELD  
EVERDRI™



# TITAN

MMA TRAINING GEAR

EVERLAST MMA

MOST EFFECTIVE TACTICS AVAILABLE



## TITAN MMA GRAPPLING GLOVEA

Advanced synthetic leather gives high levels of durability  
 Layered foam provides progressive protection.  
 Padded thumb and lower hand adds additional protection.  
 Structured finger loops ensure a secure fit and enhanced glove control.  
 Open palm design maintains full range of motion.  
 Foam padded lining improves comfort and fit.  
 Hook & loop strap system for maximum wrist support.

SKU: P00003111 S/M

SKU: P00003112 L/XL



## TITAN HYBRID GLOVES

Thick Padding Over The Knuckles Promotes Proper Form & Helps Avoid Hand Injuries.  
 Padded Thumb Provides Additional Protection.  
 Hook & Loop Strap Provide A Quick And Easy Solution To Achieve A Secure Fit.

SKU: P00003099 S/M

SKU: P00003100 L/XL

## TITAN HEADGEAR

SKU: P00003101





## EVERLAST TARGET FREESTANDING PUNCHBAG

### ENGINEERED FOR: HEAVY BAG WORKOUT

High density plastic base is easily filled with water or sand for stability.

Absorbs powerful punches.

Closed cell foam technology in the bag provides durability and hand comfort.

Full sized heavy bag with targets for full power punches, kicks, knees and elbows.

Unique target concept design to coordinate your workout and challenge yourself with the target zones for accuracy.

Approx. 360 lbs. When filled with water; 153 cm. tall.

SKU: 2168

Technologies: EVERFLEX™



# FREESTANDING BAGS



## EVERFLEX FITNESS FREESTANDING HEAVY BAG

### ENGINEERED FOR: HEAVY BAG WORKOUT

High density plastic base is easily filled with water or sand for stability.

Flexible neck allows bag to absorb power punches while reducing base movement.

Closed cell foam technology in the bag provides durability and hand comfort.

Sit-up loop and resistance bandas are included to allow you to use the freestanding bag for a full body workout.

Approx. 160 lbs. When filled with water; 67" Tall at highest setting.

SKU: 2226

Technologies: EVERFLEX™



## PRO EVERFLEX FREESTANDING HEAVY BAG

### ENGINEERED FOR: HEAVY BAG WORKOUT

High density plastic base is easily filled with water or sand for stability.

Flexible neck allows bag to absorb powerful punches while reducing base movement.

Closed cell foam technology in the bag provides durability and hand comfort.

Heavy bag for full power punches, kicks, knees and elbows.

Approx. 360 lbs. When filled with water; 76" tall.

SKU: 2232

Technologies: EVERFLEX



## POWER TOWER INFLATABLE

Inflatable punching tower offers variety of challenging workouts. Helps Improve coordination and flexibility, and lets you burn off calories and stress.

Rocks back and forth with every punch, creating knock-down, instant-up motion that builds endurance and sharpens reflexes.

Includes foot pump and leak-proof, water-weighted base that fills directly from the tap.

Made of rugged PVC material; folds flat for storage when not in use.

SKU: EV2628GD GOLD

# FREESTANDING BAGS



## HYPERFLEX™ STRIKE BAG

Punch-bag design allows for easy movement around target, increasing cardio, leg conditioning, and hand-eye coordination. Dual HYPERFLEX™ individual locking springs provide three workout settings for comprehensive punching, reflex, and cardio workouts. SPEED FLEX — [Lock Base, Unlock Neck] Setting is best for improving fast punches, combinations, and reflexes. High-density plastic base. Approx. 70 lbs when filled with water. 63" tall at highest setting.

SKU: 2264G

Technologies: EVERFLEX™



## CARDIO FITNESS TRAINING BAG

ENGINEERED FOR: CARDIO WORKOUT  
High density plastic base is easily filled with water or sand for stability.  
Durable spring neck provides for quick bag rebound while training. Premium synthetic polycanvas wrapped around an inflatable air bladder provides comfortable striking surface and long lasting durability.  
Approx. 70lbs. When filled with water; 63" tall at highest setting.

SKU: 2262

Technologies: EVERFLEX™



## MMA EVERFLEX™ STRIKING BAG

- > ENGINEERED FOR: HEAVY BAG WORKOUT
- > High density plastic base is easily filled with water or sand for stability.
- > Flexible Neck allows bag to absorb powerful punches while reducing base movement.
- > Extra long bag design for kicks and knees.
- > Approx. 160 lbs. when filled with water; 67" tall at highest setting.

SKU: MMA2226



# FREESTANDING BAGS



## HEAVY BOXING TRAINING TREE

Product total height: approx. 184cm  
PU Punch Pad (A): Ø28 / thick: 7cm x 1pc  
PU Punch Pad (B): Ø25 / thick: 7cm x 4pcs  
PU Punch Pad (C): 35x26cm / thick: 2.7-9cm x 1pc  
Spring of punch pad: Ø8.0mm x 44.5 x 145mm (L) x 5pcs  
HDPE base: Ø81 x 35.5cm (H) / about 10kgs (split into 2pcs)  
Base tank with water is about 140kgs  
Carton no.A: 147.4 x 62.4 x 36cm / 11.69'  
Carton no.B: 80.8 x 44.2 x 28.8cm / 3.63'

SKU: PA-5189

Technologies: EVERFLEX™



## POWERCORE FREE STANDING HEAVY BAG

Air-foam chamber provides realistic feel. Rounded design allows for easy movement around target increasing cardio, leg conditioning & hand-eye coordination. Powercore power transfer ring absorbs impact and reduces base movement and sliding. High density base can easily be filled with water or sand (approximately 250 lbs. With water, 370 lbs. With sand).

Solid base provides easy-to-hit target, maximizing your workout. Height is adjustable from 54" to 65". Not recommended for outside use.

SKU: P00001266

Technologies: POWERLOCK



## EVERLAST TARGET FREESTANDING PUNCHBAG

ENGINEERED FOR: HEAVY BAG WORKOUT  
High density plastic base is easily filled with water or sand for stability. Flexible neck allows bag to absorb powerful punches while reducing base movement. Closed cell foam technology in the bag provides durability and hand comfort. High grade shock absorbing foam with protective outer layer for lasting durability. Approx. 240 lbs. When filled with water; 70" tall at highest setting.

SKU: 2240

Technologies: EVERFLEX™





MEN BOOTS



BLACK



BLUE

PRO ELITE HIGHT TOP

Everlast&Michelin collaborated hybrid boxing shoe.  
Hi-top design for both casual and athletic use.  
100% Michelin rubber sole for premium comfort and durability.  
Rubber sole and open-weave mesh construction provide  
comfort and durability while minimizing weight.  
Men's sizing.  
No Half Sizes.

SKU: P00001075

|    |    |    |    |    |    |    |
|----|----|----|----|----|----|----|
| EU | 7  | 8  | 9  | 10 | 11 | 12 |
| BR | 38 | 39 | 40 | 41 | 43 | 44 |
|    | 1  | 2  | 3  | 2  | 2  | 1  |



RED

# MEN BOOT



## ULTIMATE

Rubber outsole: increased grip, durability and stability.  
Optimized comfort with anatomical designed insole.  
Bonded insole to prevent slipping.

- SKU: ELM-94B BRANCO  
SKU: ELM-94E PRETO/ DOURADO  
SKU: ELM94H NAVY

|    |     |     |     |    |    |      |    |
|----|-----|-----|-----|----|----|------|----|
| EU | 6.5 | 7.5 | 8.5 | 9  | 10 | 10.5 | 11 |
| BR | 37  | 38  | 39  | 40 | 41 | 42   | 43 |
|    | 1   | 1   | 2   | 3  | 2  | 2    | 1  |



## PIVT LOW TOP

A lightweight low top boxing shoe engineered with the understanding that footwork is everything. Constructed with high quality Michelin® Technical Sole, open weave mesh, microfiber and suede to create the perfect formula for speed, comfort and durability. The versatile hybrid design allows athletes to seamlessly transition from gym to canvas for...

SKU: P00001076 BLACK

|    |    |    |    |    |    |    |
|----|----|----|----|----|----|----|
| EU | 7  | 8  | 9  | 10 | 11 | 12 |
| BR | 38 | 39 | 40 | 41 | 43 | 44 |
|    | 1  | 2  | 3  | 2  | 2  | 1  |



MEN



SKU: ELMA39A    **BLACK / GOLD**

FORCEKNIT II

CAPELLADA  
MESH Y CUERO DE MICROFIBRA

SUELA  
GOMA

|    |     |     |     |    |    |      |    |
|----|-----|-----|-----|----|----|------|----|
| EU | 6.5 | 7.5 | 8.5 | 9  | 10 | 10.5 | 11 |
| BR | 37  | 38  | 39  | 40 | 41 | 42   | 43 |
|    | 1   | 1   | 2   | 3  | 2  | 2    | 1  |



SKU: ELMA39C    **CHARCOAL / LIME**



SKU: ELMA39E    **INDIGO / SKYDIVER**



MEN



FIST

SKU: ELMA-41B   **BLACK**

|    |     |     |     |    |    |      |    |
|----|-----|-----|-----|----|----|------|----|
| EU | 6.5 | 7.5 | 8.5 | 9  | 10 | 10.5 | 11 |
| BR | 37  | 38  | 39  | 40 | 41 | 42   | 43 |
|    | 1   | 1   | 2   | 3  | 2  | 2    | 1  |



FIST

SKU: ELMA-41A   **MOOD INDIGO**

|    |     |     |     |    |    |      |    |
|----|-----|-----|-----|----|----|------|----|
| EU | 6.5 | 7.5 | 8.5 | 9  | 10 | 10.5 | 11 |
| BR | 37  | 38  | 39  | 40 | 41 | 42   | 43 |
|    | 1   | 1   | 2   | 3  | 2  | 2    | 1  |



# MEN



## FORCEKNIT II L.E. 110Y

CAPELLADA  
MESH Y CUERO DE MICROFIBRA

SUELA  
GOMA

SKU: ELMA39A **BLACK / GREY**

|    |     |     |     |    |    |      |    |
|----|-----|-----|-----|----|----|------|----|
| EU | 6.5 | 7.5 | 8.5 | 9  | 10 | 10.5 | 11 |
| BR | 37  | 38  | 39  | 40 | 41 | 42   | 43 |
|    | 1   | 1   | 2   | 3  | 2  | 2    | 1  |

## STATION

SKU: ELMA-27B **BLACK**

|    |     |     |     |    |    |      |    |
|----|-----|-----|-----|----|----|------|----|
| EU | 6.5 | 7.5 | 8.5 | 9  | 10 | 10.5 | 11 |
| BR | 37  | 38  | 39  | 40 | 41 | 42   | 43 |
|    | 1   | 1   | 2   | 3  | 2  | 2    | 1  |



# LADIES



SKU: ELWA39B BLACK / SILVER



## FORCEKNIT II

CAPELLADA  
MESH Y CUERO DE MICROFIBRA

SUELA  
GOMA

|    |     |    |    |    |    |
|----|-----|----|----|----|----|
| EU | 5.5 | 6  | 7  | 8  | 9  |
| BR | 34  | 35 | 36 | 37 | 38 |
|    | 1   | 3  | 4  | 3  | 1  |

## FORCEKNIT II L.E. 110Y

CAPELLADA  
MESH Y CUERO DE MICROFIBRA

SUELA  
GOMA

|    |     |    |    |    |    |
|----|-----|----|----|----|----|
| EU | 5.5 | 6  | 7  | 8  | 9  |
| BR | 34  | 35 | 36 | 37 | 38 |
|    | 1   | 3  | 4  | 3  | 1  |



SKU: ELWA69D BLACK / GREY





# APPAREL





# MMA SHORTS



EV55LAM281  
BLACK/RED

MATERIALS: 95% POLYESTER, 5% SPANDEX



1/S 2/M 2/L 1/XL

EV55LAM291  
BLUE

EV55LAM292  
BLUE



1/S 2/M 2/L 1/XL



# MMA RASHGUARD



EV75LAM201

BLACK

EV75LAM203

BLUE

EV75LAM202

RED

MATERIALS: 70% POLYESTER, 30% SPANDEX

1/S 2/M 2/L 1/XL

BACK



BACK



BACK



# KARATE



## KARATE UNIFORMS

Top quality 100% cotton, uniform comfortable  
And easy to care for double line, reinforced  
stitching on the collars and cuffs  
Inset panels on jacket for greater durability  
Double-layered fabric at shoulders  
Bound side vents with tie cords  
Crotch gusset with triangular inseam inserts  
Elastic drawstring waist

SKU: EVKU7140  
SIZE 0000

SKU: EVKU7130  
SIZE 000

SKU: EVKU7120  
SIZE 00

SKU: EVKU7110  
SIZE 0

SKU: EVKU7101  
SIZE 1

SKU: EVKU7102  
SIZE 2

SKU: EVKU7103  
SIZE 3

SKU: EVKU7104  
SIZE 4

SKU: EVKU7105  
SIZE 5

SKU: EVKU7106  
SIZE 6

SKU: EVKU7107  
SIZE 7



## KARATE BELT

Traditional and versatile, this polyester/cotton  
middleweight, double-wrap belt includes seven  
rows of stitching. Width: 1.75"

SKU: EVKB7420

COLOR:



MATERIALS: 100% COTTON

# MARTIAL ARTS PROTECTORS



## COMPETITION HOGU

Reversible blue and red hogu  
Contoured shape enables freedom of  
Movement without compromising safety.  
Competition hogu chest protector.  
Safeguards top of shoulder.  
Adjustable belts.

**SKU:** EVMA9CP6

**COLOR:** Blue / White - Red / White

**S M L XL**



## KARATE MITTS

Open palm  
Adjustable velcro  
Reinforced padding  
Stitched by durable nylon thread  
Seams closed to avoid cuts

**SKU:** EVHG1K60

**COLOR:** Blue, Red

**XS S M L XL**



# JIU JITSU



## JIU JITSU GI

TOP QUALITY 100% COTTON, UNIFORM COMFORTABLE AND EASY TO CARE FOR  
Reinforced with Double-Stitching Throughout Jacket and Pants.  
Designed with 550-gm Gold Spec-Weave Material and 12oz Twill Cotton for Superior Strength and Durability.  
Lightweight for Ultimate Maneuverability.  
Traditional Branded Patch Detailing.

|       |             |             |         |         |             |             |
|-------|-------------|-------------|---------|---------|-------------|-------------|
| M TS  | 1.55 a 1.62 | 1.60 a 1.72 | 1.70    | a1.82   | 1.80 a 1.91 | 1.89 a 1.96 |
| KG    | 51 a 60     | 57 a 65     | 65 a 80 | 80 a 94 | 92 a 116    |             |
| TALLA | 1           | 2           | 3       | 4       | 5           |             |

- SKU: EVJJ5L001  
COLOR: Blue  
SIZE 1  
SKU: EVJJ5L003  
COLOR: Blue  
SIZE 3  
SKU: EVJJ5L004  
COLOR: Blue  
SIZE 4  
SKU: EVJJ5L005  
COLOR: Blue  
SIZE 5
- SKU: EVJJ5L811  
COLOR: White  
SIZE 1  
SKU: EVJJ5L813  
COLOR: White  
SIZE 3  
SKU: EVJJ5L814  
COLOR: White  
SIZE 4  
SKU: EVJJ5L815  
COLOR: White  
SIZE 5



## JIU JITSU BELTS

100% COTTON BELTS.  
SUPERIOR COTTON FOR MAXIMUM DURABILITY.  
THICKER THAN THE AVERAGE MARTIAL ARTS BELT.  
EACH BELT COMES WITH GRADING BAR FOR STRIPES.  
ESPECIALLY MADE FOR JIU JITSU GIS.



- SKU: EVJJB5L01 COLOR: White  
SKU: EVJJB5L02 COLOR: Blue  
SKU: EVJJB5L04 COLOR: Brown  
SKU: EVJJB5L05 COLOR: Black

### AVAILABLE BELTS



# MARTIAL ARTS PROTECTORS



## ADGEAR

The everlast headgear offers excellent flexibility And movement and is well ventilated for better comfort. Available in three color: black, red, and blue. Sized to fit for children and adult. High-quality foam head gear Ear-release canals for added protection to eardrums during sparring Protects the top of the head while also allowing heat to escape Provides air flow throughout the head gear



SKU: EVMA9H4

COLOR: Black, Blue, Red

S M L XL



## HAND PROTECTOR

Strong dipped foam for greater shock absorption. Contour design to fit the hand comfortably. Full-finger coverage for added protection. Adjustable hook/loop closure. We use quality raw material for the manufacturing of these gloves. That ensures better ventilation and comfort to the wearer.



SKU: EVMA9P2

COLOR: Black, Blue, Red

S M L XL



## SHIN/INSTEP GUARD

Strong dipped foam for greater shock Absorption. Contour design for superior fit and ventilation. Adjustable hook/loop closure.

SKU: EVMA915

COLOR: Black, Blue, Red

S M L XL



## HI-TOP BOOTS

Strong dipped foam for greater shock absorption. its left and right foot. einforced bottom strap. we use quality raw material for the manufacturing of these boots that Ensures better ventilation and comfort to the wearer.



SKU: EVMA9K3

COLOR: Black, Blue, Red

S M L XL

# MARTIAL ARTS PROTECTORS



## ADGEAR

The everlast headgear offers excellent flexibility and movement and is well ventilated for better comfort. Available in three color: black, red, and blue. Sized to fit for children and adult. High-quality foam head gear. Ear-release canals for added protection to eardrums during sparring. Protects the top of the head while also allowing heat to escape. Provides air flow throughout the head gear.

SKU: EVMA9H4

COLOR: Black, Blue, Red

S M L XL



## SHIN/INSTEP GUARD

Strong dipped foam for greater shock absorption. Contour design for superior fit and ventilation. Adjustable hook/loop closure.

SKU: EVMA915

COLOR: Black, Blue, Red

S M L XL



## HAND PROTECTOR

Strong dipped foam for greater shock absorption. Contour design to fit the hand comfortably. Full-finger coverage for added protection. Adjustable hook/loop closure. We use quality raw material for the manufacturing of these gloves. That ensures better ventilation and comfort to the wearer.

SKU: EVMA9P2

COLOR: Black, Blue, Red

S M L XL



## HI-TOP BOOTS

Strong dipped foam for greater shock absorption. its left and right foot. reinforced bottom strap. we use quality raw material for the manufacturing of these boots that Ensures better ventilation and comfort to the wearer.

SKU: EVMA9K3

COLOR: Black, Blue, Red

S M L XL



# KEY CHAIN

EVERLAST



SKU:700000 -BK  
COLOR: Black



SKU:700000 -BL  
COLOR: Blue



SKU:700000 -RD  
COLOR: Red



SKU :700000 -PK  
COLOR: Pink





**BOXING & MMA**

**PARA MAYOR INFORMACIÓN COMUNÍQUESE  
CON SU EJECUTIVO DE VENTAS**

DEPORTES JIMMY CR S.A

AN AUTHORIZED LICENSEE OF EVERLAST WORLDWIDE INC,  
Ofibodegas Capri, Bodega #20, de Multiplaza Escazú, 1 km al norte,  
contiguo al Colegio Blue Valley. Guachipelín.  
San José. Costa Rica

**T:** (506) 2215 1578 / 2215 1745

**C:** [ventascr@djimmy.net](mailto:ventascr@djimmy.net)

[WWW.EVERLASTLATAM.COM](http://WWW.EVERLASTLATAM.COM)



EVERLASTLATINO



@EVERLASTLATAM

